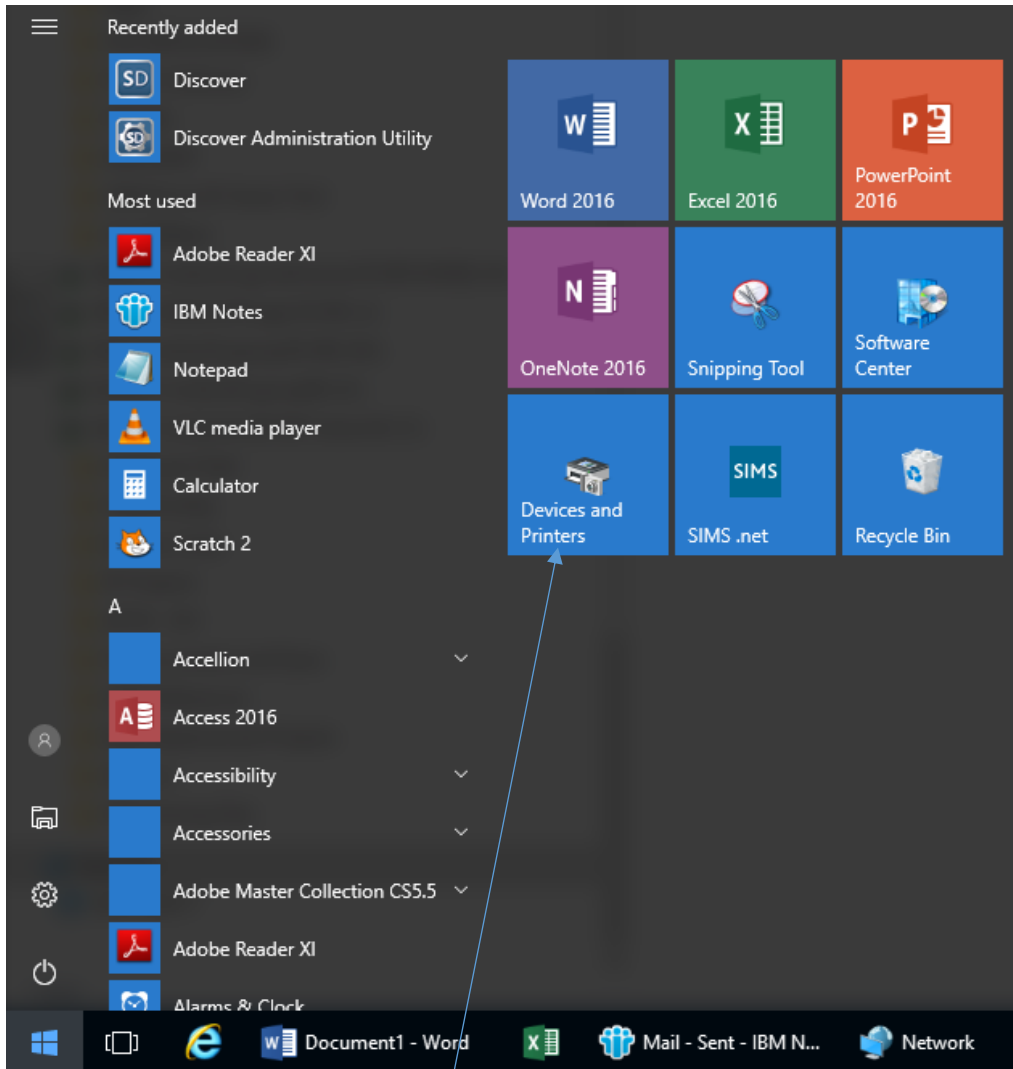


Steps to follow to add printer

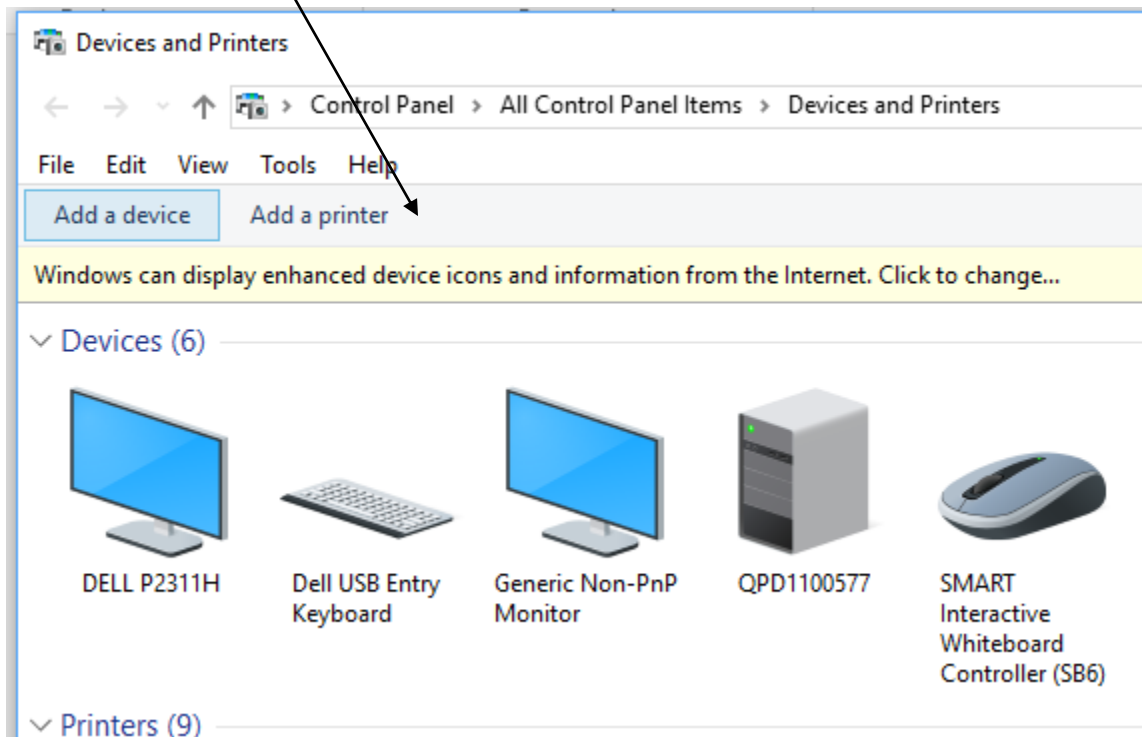
1. On the actual printer press to select “Network Report” –press OK to get the **Network Summary**
2. Highlight IP Address on the report e.g. **IP Address 10.121.132.23**
3. Click on your PC's start Menu and select Devices and Printers



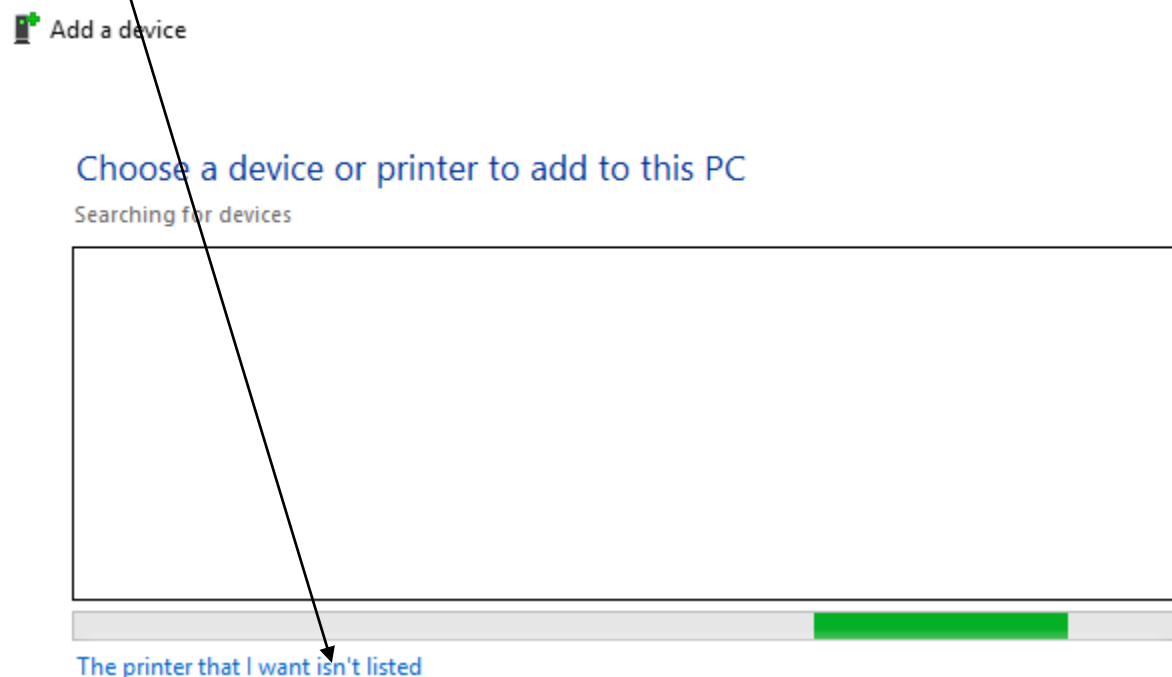
Click on your PC's start Menu and select Devices and Printers

Steps to follow to add printer

4. Select add a printer



5. Select



Steps to follow to add printer